

MANUFACTURING SOLUTIONS

ACCURATE, END-TO-END IDENTIFICATION



MANUFACTURING



Accurate, End-to-End Identification

On the manufacturing shop-floor, the SATO Manufacturing Solution helps identify and keep track of raw materials, sub-assemblies and finished products all through the manufacturing process. It enables the manufacturer to have real-time visibility of processes and therefore efficient production control, while constantly improving quality and efficiency of the manufacturing process itself. The SATO printing solutions' various communication interfaces means its printers and devices can be easily integrated into manufacturing information systems, including wirelessly via secure IEEE 802.11-standard wireless communication.

Benefits of Manufacturing Solution

Identification & tracking

Captures data, marks, on all materials, parts, assemblies, and sub-assemblies right through the manufacturing process.

Traceability

Identification enables tracking, which enables traceability, and helps to provide real-time access to critical data throughout the process.

Meets All Your Compliance Labelling Requirements & Standards

RFID Ready Printing Solution

Empowers you to manage barcode requirements today, while supporting expanding rfid requirements without needing to change the entire infrastructure.

Applications

Materials Management

To enable the identification and tracking of materials received from suppliers right through to the end of the manufacturing process.

Small Item Marking

Small items pose a challenge to identify and keep track of. They require high-resolution thermal printers or very accurate automatic applicators, so they can be labelled correctly without significantly slowing production speed.

Work-In-Process Tracking

Accurate, automatic tracking, and also helps to efficiently manage the operations the work-in-process goes through.

Quality Control

Enables identification of a phase of production, determination of its quality, as well as identification of the employees responsible for the different stages of production.

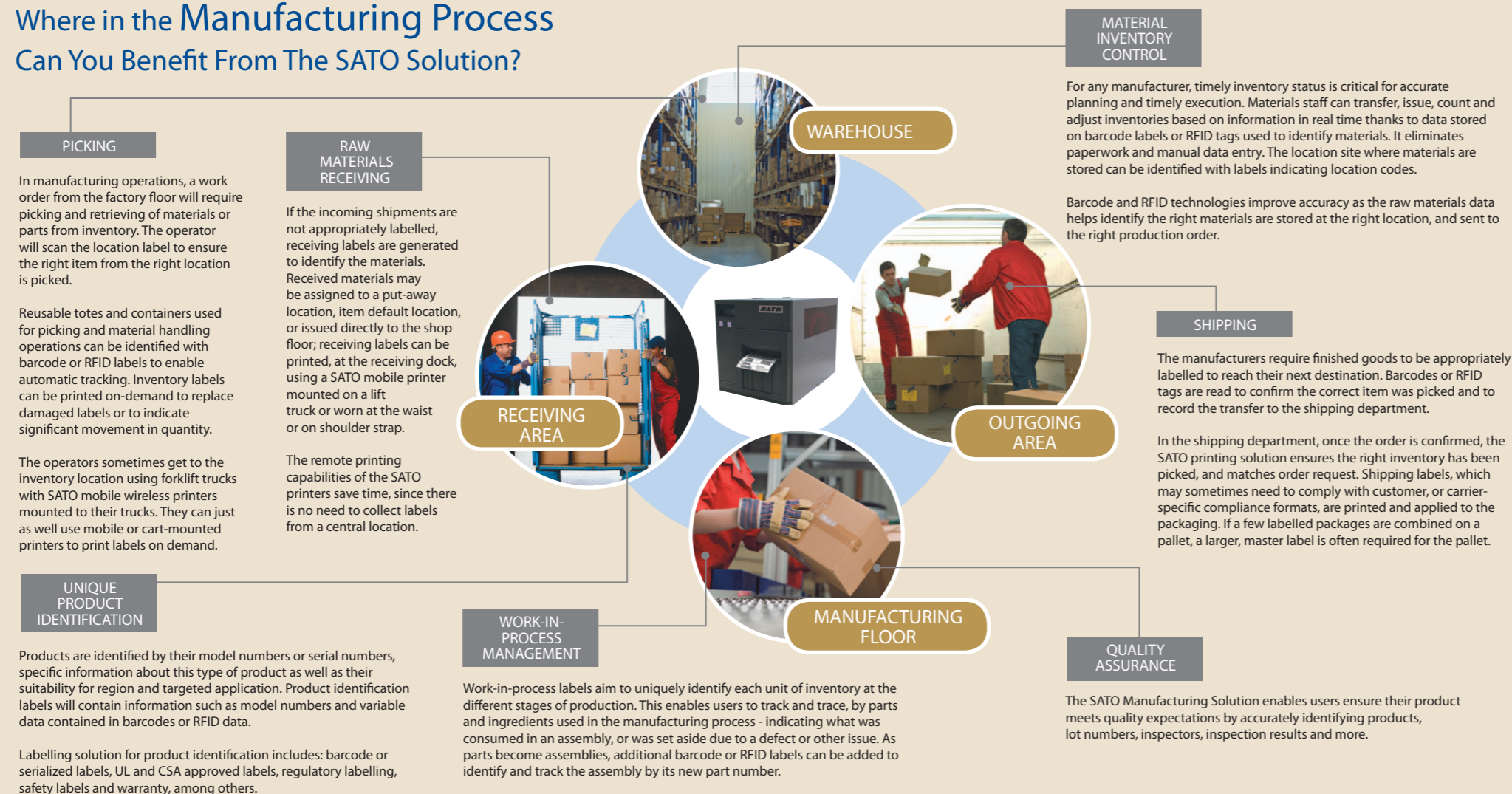
Product Identification

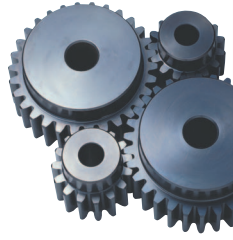
Enables manufacturers to meet their Unique Identification (UID) compliance requirements, identifying parts and products.

SATO Manufacturing Solution For Various Industries

- Aerospace
- Automotive & Industrial Machinery
- Chemicals
- Computers & Electronics
- Consumer Packaged Goods
- Metal
- Pharmaceuticals
- Textiles

Where in the Manufacturing Process Can You Benefit From The SATO Solution?





The SATO Manufacturing Solution has all the components to meet your identification, data collection and labelling needs. It enables end-to-end identification and tracking of materials, parts and products throughout the manufacturing process.

Labelling Solutions

General labels in industry-compliant formats and custom-made labels; tags; carbon ribbons; RFID labels & tags; specialty labels & tags, e.g. DuraMark™ wristbands, horticulture labels & tags, FlagTagSolution™, linerless labels among others.

Scanning Equipment & Terminals

SATO's solution always selects the most suitable option of scanning equipment and terminals to uniquely meet your identification and data collection needs.

Software & Applications

SATO Label Gallery™ software solution offers a scalable and versatile set of tools to meet all labelling design and printing needs.



Integration Services

Integration of printers and hardware components to your back-end enterprise system or business applications. In addition to application development and system deployment, we also provide consulting services, which starts with an unequivocal, rigorous understanding of the users' environment, unique challenges and organizational objectives. We then plan and select the solution set that ensures seamless integration and timely implementation.

Printing Solutions

Rugged industrial printing solutions, with RFID functionality. From print engines that power print-and-apply systems to enable the manufacturer to manage materials, track work-in-process, assure quality control, meet compliance requirements and enable product identification. Mobile printing solutions with wireless networking options allows on-demand, on-site printing and inventory control management.

- **Industrial Printers: 4- & 6-inch**
The various models are suited for a wide range of industrial applications, environments and requirements, from common industrial applications to applications that demand mission-critical performance and ruggedness, to seamless integration into enterprise systems and applications.
Rich set of options, including wide range of interface connectivity and RFID options.
- **Mobile & Portable Printers: 2- & 4-inch**
Worn at the waist, strapped over the shoulder, or vehicle-mounted, they combine convenience and durability to meet the efficiency requirements of your mobile printing needs.
- **Wide Format Printers: 10-inch**
Wide-label printing with industry-leading throughput. These rugged printers are designed to deliver consistent performance in demanding industrial environments and applications. RFID options available.
- **Commercial Desktop Printers: 4-inch**
Compact and versatile, their feature-rich designs make them suitable for applications in healthcare, logistics and food processing. RFID options available.
- **Print Engines: 4- & 6-inch**
Designed for easy integration into automatic print/apply systems, all components of these high-duty cycle engines are selected for reliable performance over extended periods of time. RFID options available.

Maintenance Services

Printer servicing, installation, repair and maintenance services conveniently provided by readily-available expert SATO service staff or SATO-trained intermediaries worldwide.



Contact For more information about SATO around the globe, visit www.sato-worldwide.com

AMERICAS

10350A Nations Ford Road Charlotte, NC
28273
Tel: (704) 644-1650
Fax: (704) 644-1662
E: satosales@satoamerica.com

ASIA PACIFIC & OCEANIA

438B, Alexandra Road,
#09-01/02, Alexandra Technopark
Singapore 119968
Tel: (65) 6271-5300
Fax: (65) 6273-6011
E: sales@satoasiapacific.com

EUROPE

Lambroekstraat 5A, 1831 Diegem, Belgium
Tel: (32) 2 719 03 90
Fax: (32) 2 719 03 99
E: info@be.satoeurope.com

For sales & general enquiries: sales@satogbs.com